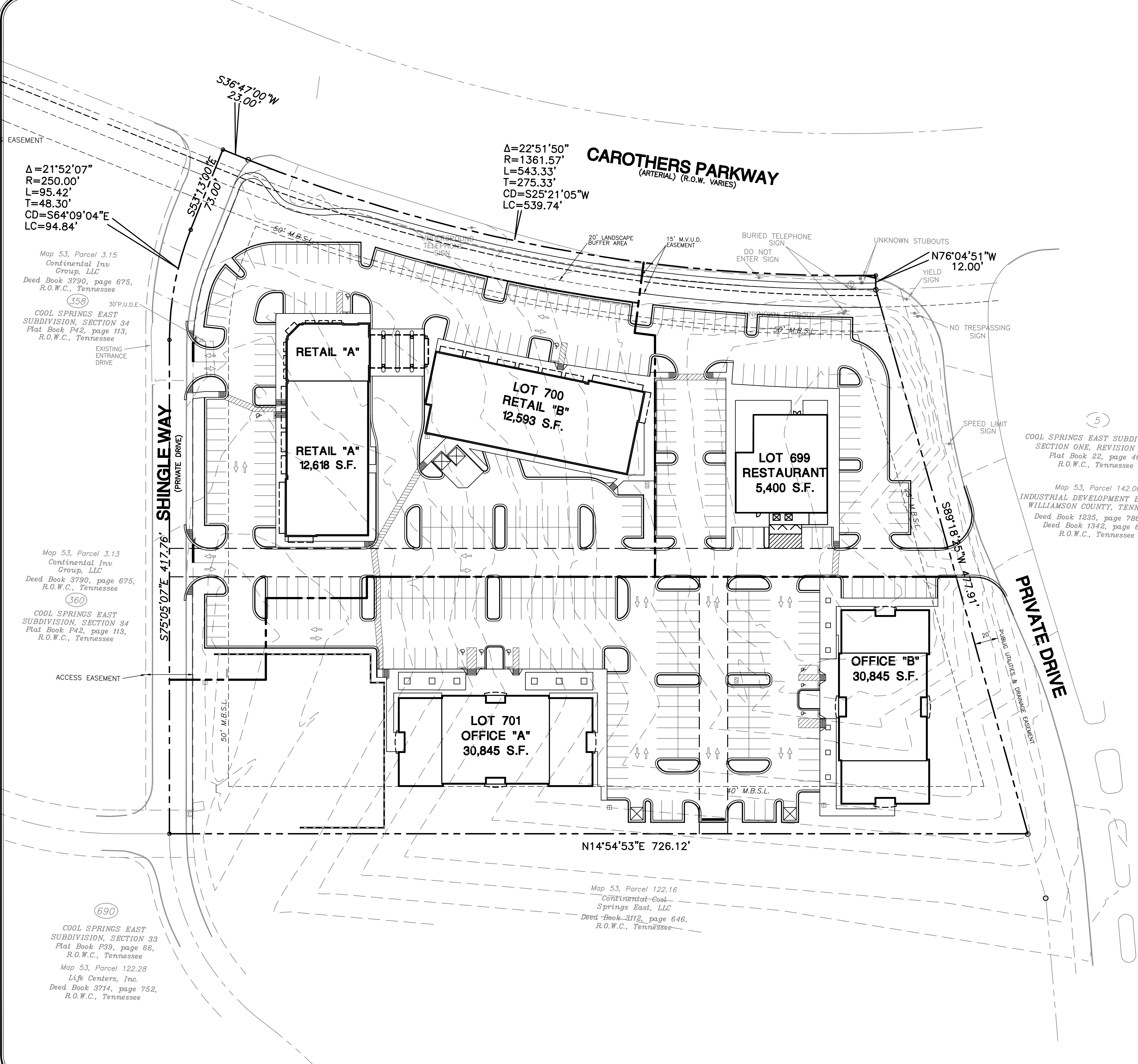


**CAROTHERS PARK SHOPPES
 TRACT F - SOUTH**
 EIGHTH CIVIL DISTRICT, PROJECT #1299
 CITY OF FRANKLIN, WILLIAMSON COUNTY, TENNESSEE
SITE EXHIBIT #14

DATA TABLE					
LOT	USE	REQUIRED	PROVIDED	DIFFERENCE#	ACREAGE
699	RESTAURANT	64	80	+16	1.31
700	RETAIL	126	140	+14	3.04
701	OFFICE	206	172	-34	3.27
TOTALS		396	392	-4	7.62



(5)
 COOL SPRINGS EAST SUBDIVISION
 SECTION ONE, REVISION ONE
 Plat Book 22, page 46,
 R.O.W.C., Tennessee
 Map 53, Parcel 142.00
 INDUSTRIAL DEVELOPMENT BOARD OF
 WILLIAMSON COUNTY, TENNESSEE
 Deed Book 1235, page 786 and
 Deed Book 1342, page 863,
 R.O.W.C., Tennessee

$\Delta=21^{\circ}52'07''$
 $R=250.00'$
 $L=95.42'$
 $T=48.30'$
 $CD=S64^{\circ}09'04''E$
 $LC=94.84'$

$\Delta=22^{\circ}51'50''$
 $R=1361.57'$
 $L=543.33'$
 $T=275.33'$
 $CD=S25^{\circ}21'05''W$
 $LC=539.74'$

CAROTHERS PARKWAY
 (ARTERIAL) (R.O.W. VARIES)

SHINGLEWAY
 (PRIVATE DRIVE)

PRIVATE DRIVE

Map 53, Parcel 3.15
 Continental Inv
 Group, LLC
 Deed Book 3790, page 675,
 R.O.W.C., Tennessee

(358)
 30' P.U.D.E.
 COOL SPRINGS EAST
 SUBDIVISION, SECTION 34
 Plat Book P42, page 113,
 R.O.W.C., Tennessee

Map 53, Parcel 3.13
 Continental Inv
 Group, LLC
 Deed Book 3790, page 675,
 R.O.W.C., Tennessee

(360)
 COOL SPRINGS EAST
 SUBDIVISION, SECTION 34
 Plat Book P42, page 113,
 R.O.W.C., Tennessee

Map 53, Parcel 122.16
 Continental-Cool
 Springs East, LLC
 Deed Book 3112, page 646,
 R.O.W.C., Tennessee

(690)
 COOL SPRINGS EAST
 SUBDIVISION, SECTION 33
 Plat Book P39, page 66,
 R.O.W.C., Tennessee
 Map 53, Parcel 122.28
 Life Centers, Inc.
 Deed Book 3714, page 752,
 R.O.W.C., Tennessee

REVISIONS	
DESIGNED BY:	R. Fussell
DRAWN BY:	S. Tipton
APPROVED BY:	R. Fussell
SCALE:	1"=40'
DATE:	June 22, 2007
JOB NO.	WK. ORDER
85-132	8258



IF YOU DIG TENNESSEE...
 CALL US FIRST!
 1-800-351-1111
 1-615-366-1987
 TENNESSEE ONE CALL
 IT'S THE LAW

